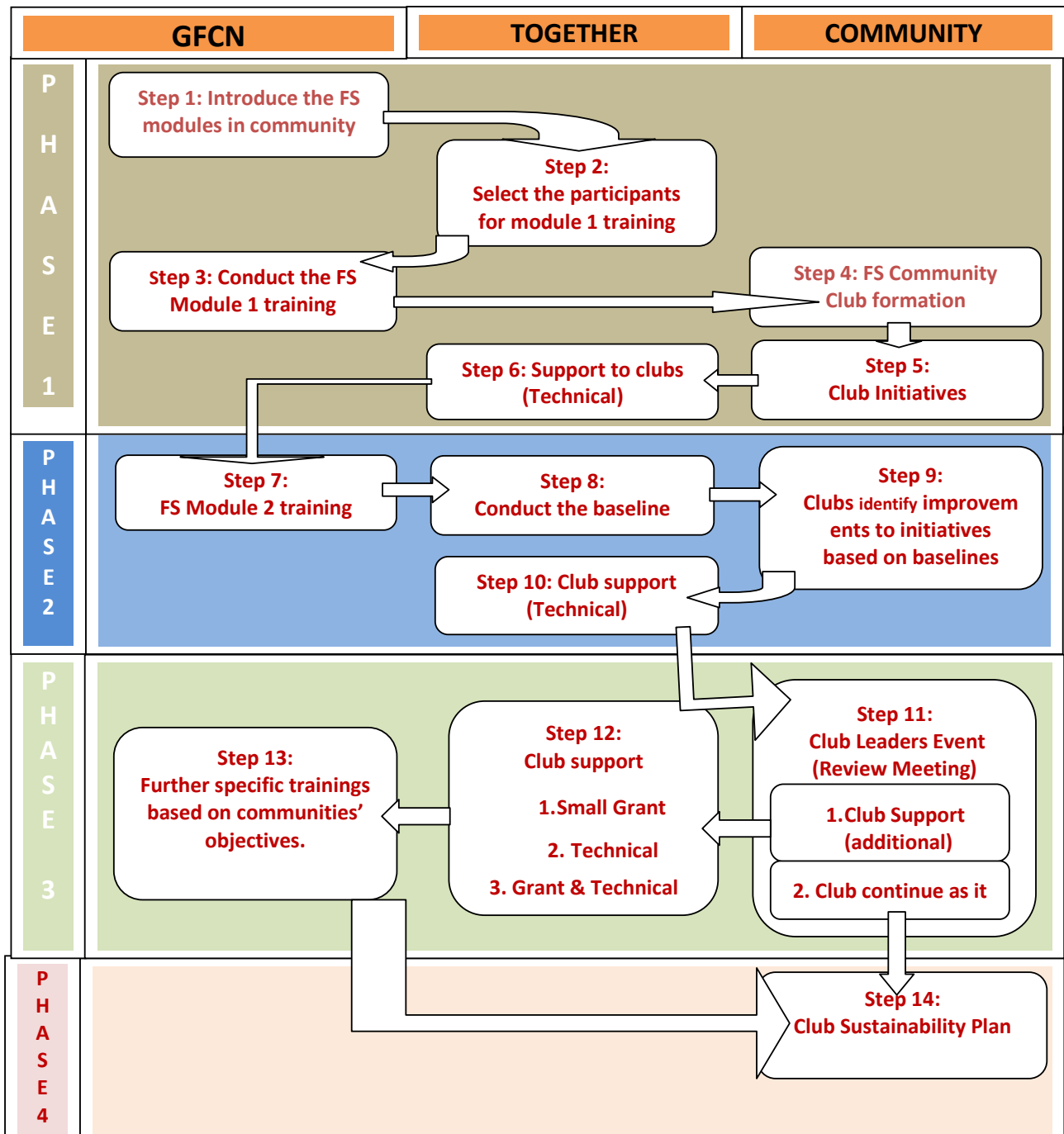


# Family Strengthening Project Model Process

A community based approach for keeping our children safe

Club<sup>1</sup>Strengthening and Sustainability Plan



GFCN: Global Family Care Network

Community: Possible partners – NGOs, church, group, club etc

Together: GFCN and Community

<sup>1</sup> Group of 3 or 4 people doing some community based initiatives.